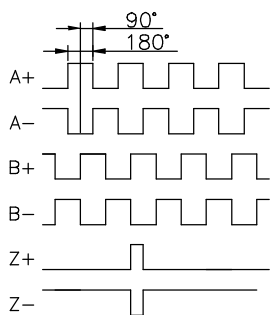
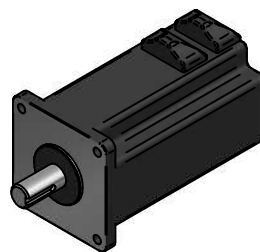
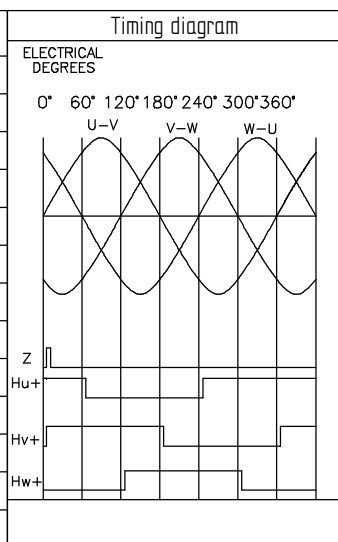


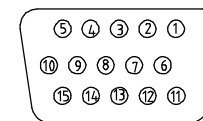
| ENCODER | |
|------------|-------------|
| VOLTAGE | +5 VDC ±5% |
| CURRENT | max. 200 mA |
| FREQUENCY | 0 - 125 kHz |
| TEMP. | 20 - 100 °C |
| RESOLUTION | 1000 |



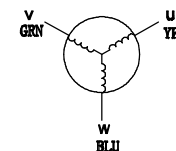
| Motor Specification | |
|---------------------|------------------------|
| Resistance | 0.10 Ohm ±10% |
| Inductance | 0.12 mH ±20% |
| Voltage | 24 VDC |
| Rated Power | 313 W |
| Rated Speed | 3000 rpm |
| Rated Current | 17 A |
| Rated Torque | 1.0 Nm |
| Peak Current | 51 A |
| Peak Torque | 3.0 Nm |
| Ke (RMS) | 4.25 V/Krpm |
| Rotor Inertia | 0.74 kgcm ² |
| Number of Poles | 8 |
| Weight | 2.3 kg |



Encoder connector - D-SUB HD 15 PIN



Motor phases



ENCODER CONNECTIONS

| Pin | Color | Signal |
|-----|---------|--------|
| 1 | red | +5V |
| 2 | blk | GND |
| 3 | - | - |
| 4 | yel | U+ |
| 5 | yel/blk | U- |
| 6 | blu | Z+ |
| 7 | gry | B+ |
| 8 | brn | A+ |
| 9 | whi | W+ |
| 10 | grn | V+ |
| 11 | blu/blk | Z- |
| 12 | gry/blk | B- |
| 13 | brn/blk | A- |
| 14 | wht/blk | W- |
| 15 | grn/blk | V- |

MOTOR CONNECTIONS

| Pin | Color | Signal |
|-----|-------|--------|
| 1 | yel | U |
| 2 | grn | V |
| 3 | blu | W |

PSM70-3130B8E1ND