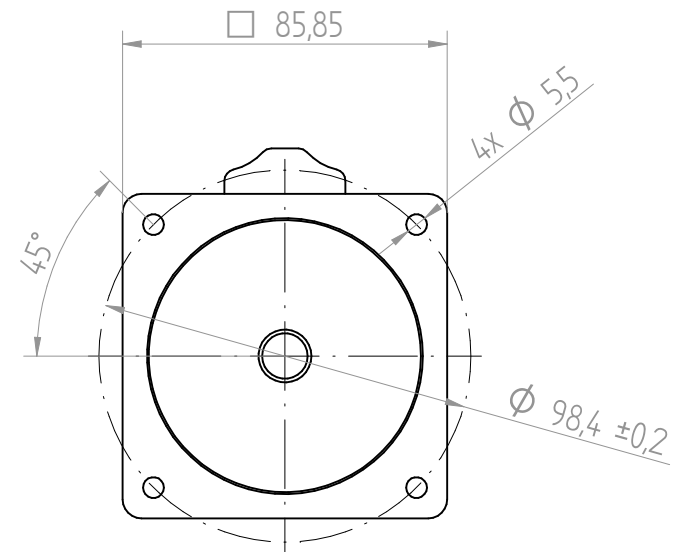
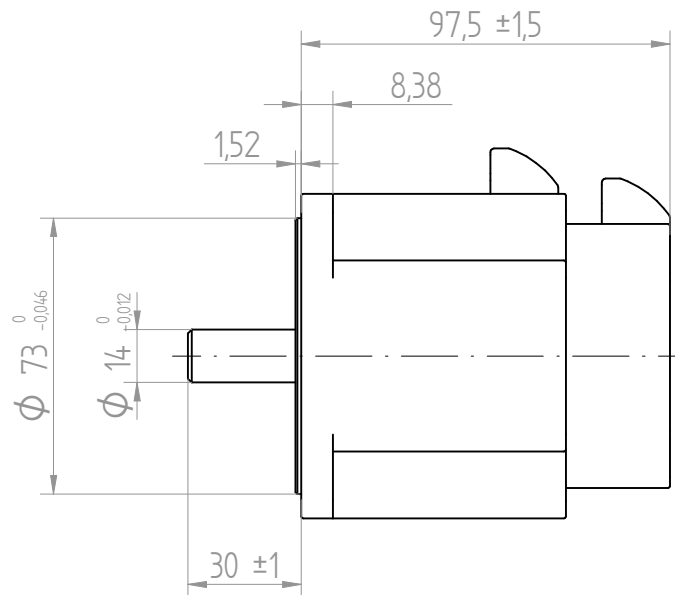
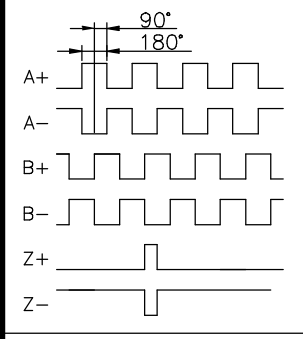
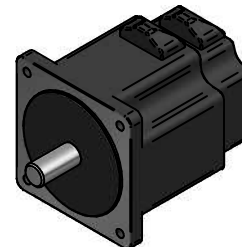
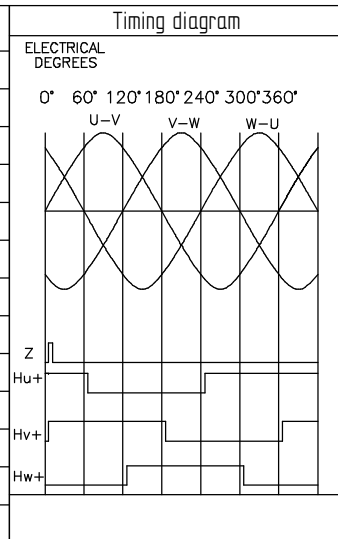


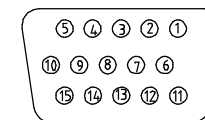
ENCODER	
VOLTAGE	+5 VDC ±5%
CURRENT	max. 200 mA
FREQUENCY	0 - 125 kHz
TEMP.	20 -100 °C
RESOLUTION	1000



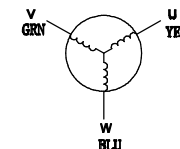
Motor Specification	
Resistance	0,13 Ohm ±10%
Inductance	0,18 mH ±20%
Voltage	24 VDC
Rated Power	220 W
Rated Speed	3000 rpm
Rated Current	12 A
Rated Torque	0.7 Nm
Peak Current	36 A
Peak Torque	2.1 Nm
Ke (RMS)	4.3 V/Krpm
Rotor Inertia	0.8 kgcm <sup>2</sup>
Number of Poles	8
Weight	2.0 kg



Encoder connector - D-SUB HD 15 PIN



Motor phases



#### ENCODER CONNECTIONS

Pin	Color	Signal
1	red	+5V
2	blk	GND
3	-	-
4	yel	U+
5	yel/blk	U-
6	org	Z+
7	gry	B+
8	brn	A+
9	whi	W+
10	grn	V+
11	org/blk	Z-
12	gry/blk	B-
13	brn/blk	A-
14	wht/blk	W-
15	grn/blk	V-

#### MOTOR CONNECTIONS

Pin	Color	Signal
1	yel	U
2	grn	V
3	blu	W

PSM86-2230B8E1ND

**...POSITEC**