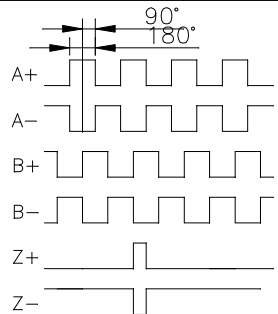
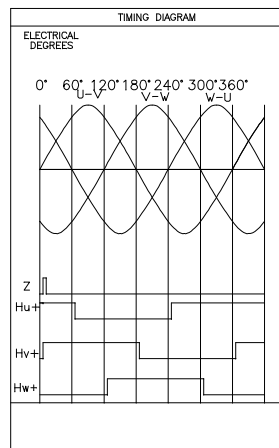


ENCODER	
VOLTAGE	+5 VDC±5%
CURRENT	125 mA
FREQUENCY	0~125 khz
TEMP.	-20~100°C
RESOLUTION	1000

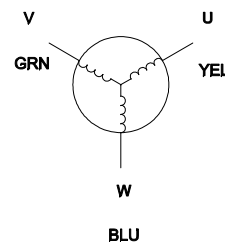


Motor Specification	
Resistance	0.89Ω±10%
Inductance	0.62mH±20%
Voltage	24VDC
Rated power	62W
Rated Speed	3000rpm
Rated Current	4.0A
Rated Torque	0.2Nm
Peak Current	14A
Peak Torque	0.6 Nm
Ke(RMSL-L)	4.3 V/Krpm
Rotor Inertia	0.28Kg.cm ²
Number of Poles	8
Weight	0.60Kg



MOTOR CONNECTIONS		
PIN	COLOR	SIGNAL
1	yel	U
2	grn	V
3	blu	W

ENCODER CONNECTIONS		
PIN	COLOR	SIGNAL
1	red	+5VDC
2	blk	GND
3	yel	A+
4	yel/blk	A-
5	grn	B+
6	grn/blk	B-
7	blu	Z+
8	blu/blk	Z-



POSITEC		PSM42-630B8E1NL		1:1