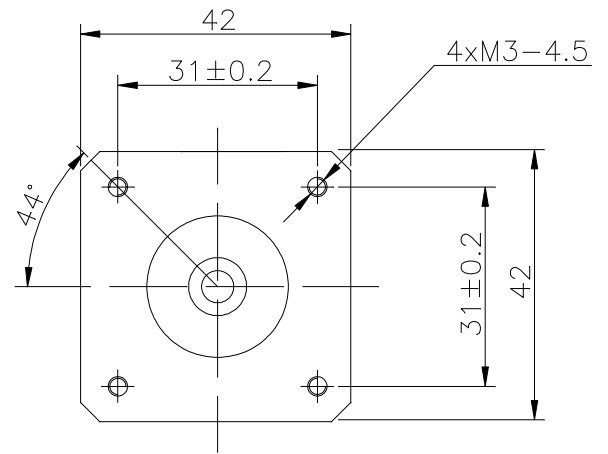
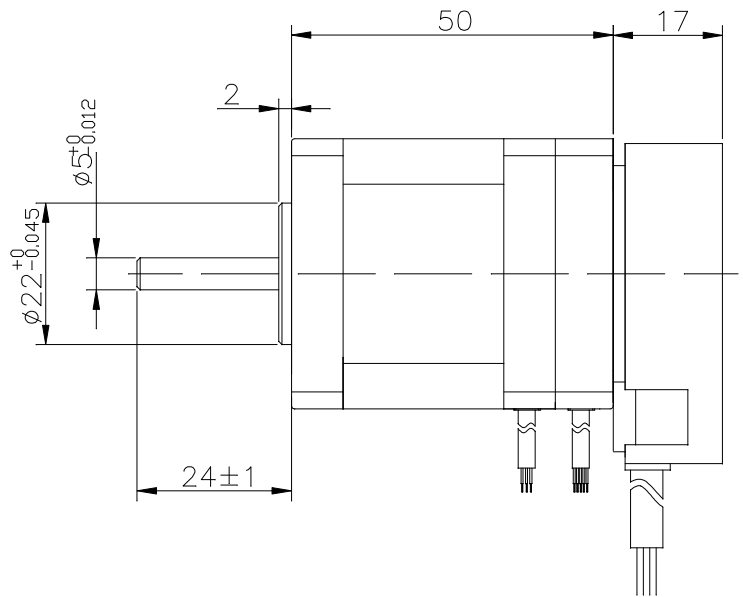
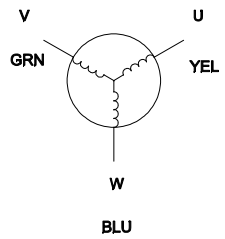
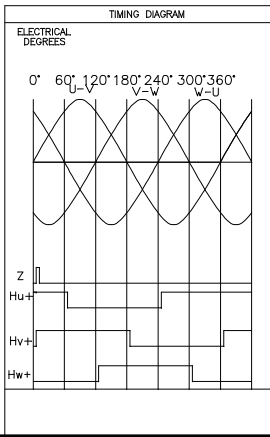


ENCODER	
VOLTAGE	+5 VDC±5%
CURRENT	125 mA
FREQUENCY	0~125 kHz
TEMP.	-20~100°C
RESOLUTION	1000
	90°
	180°
A+	
A-	
B+	
B-	
Z+	
Z-	



Motor Specification	
Resistance	2.1 Ω±10%
Inductance	1.4 mH±20%
Voltage	24VDC
Rated power	31W
Rated Speed	3000rpm
Rated Current	1.8A
Rated Torque	0.1Nm
Peak Current	8 A
Peak Torque	0.3 Nm
Ke(RMSL-L)	4.3 V/Krpm
Rotor Inertia	0.029Kg.cm ²
Number of Poles	8
Weight	Kg



MOTOR CONNECTIONS		
PIN	COLOR	SIGNAL
1	yel	U
2	grn	V
3	blu	W

ENCODER CONNECTIONS		
PIN	COLOR	SIGNAL
1	red	+5VDC
2	blk	GND
3	yel	A+
4	yel/blk	A-
5	grn	B+
6	grn/blk	B-
7	blu	Z+
8	blu/blk	Z-

POSITEC		PSM42-330B8E1NL		1:1