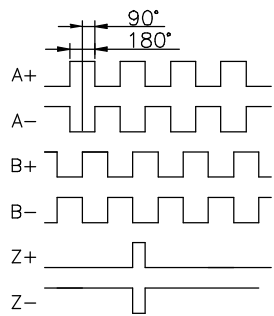
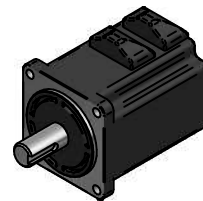
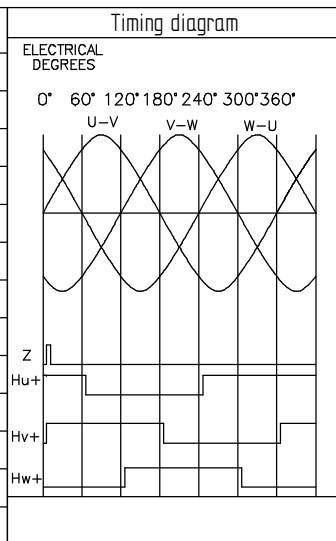


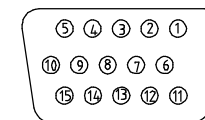
ENCODER	
VOLTAGE	+5 VDC ±5%
CURRENT	max. 200 mA
FREQUENCY	0 - 125 kHz
TEMP.	20 - 100 °C
RESOLUTION	1000



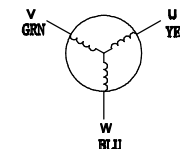
Motor Specification	
Resistance	0.56 Ohm ±10%
Inductance	0.55 mH ±20%
Voltage	24 VDC
Rated Power	78 W
Rated Speed	3000 rpm
Rated Current	4.2 A
Rated Torque	0.25 Nm
Peak Current	12.6 A
Peak Torque	0.75 Nm
Ke (RMS)	4.1 V/Krpm
Rotor Inertia	0.24 kgcm <sup>2</sup>
Number of Poles	8
Weight	0.75 kg



Encoder connector - D-SUB HD 15 PIN



Motor phases



ENCODER CONNECTIONS		
Pin	Color	Signal
1	red	+5V
2	blk	GND
3	-	-
4	yel	U+
5	yel/blk	U-
6	blu	Z+
7	gry	B+
8	brn	A+
9	whi	W+
10	grn	V+
11	blu/blk	Z-
12	gry/blk	B-
13	brn/blk	A-
14	wht/blk	W-
15	grn/blk	V-

MOTOR CONNECTIONS		
Pin	Color	Signal
1	yel	U
2	grn	V
3	blu	W

PSM60-730B8E1ND

**...::POSITEC**